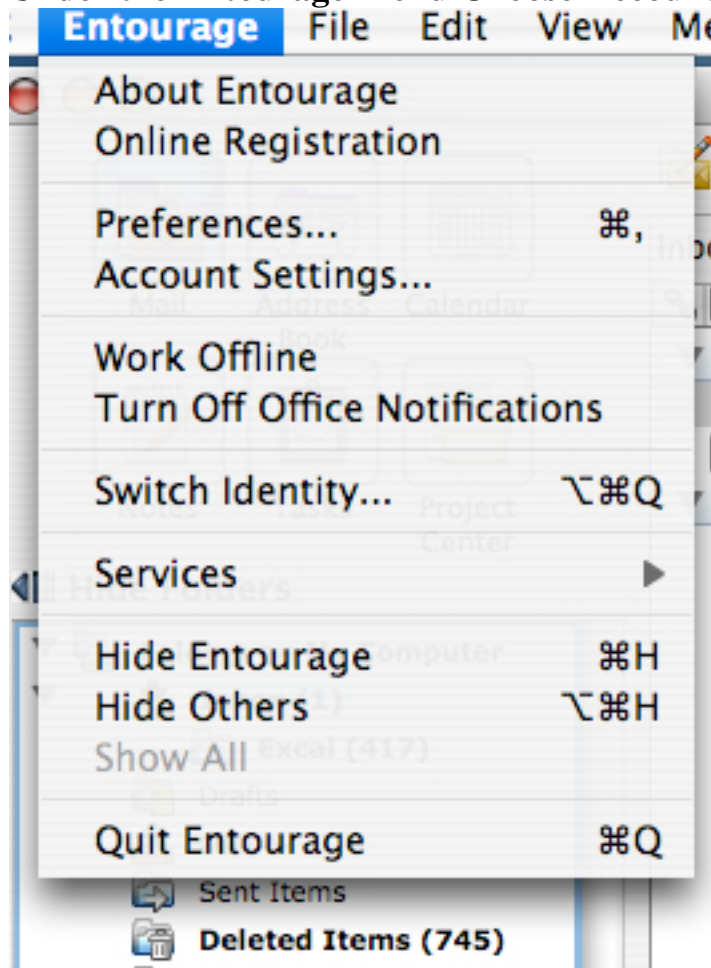
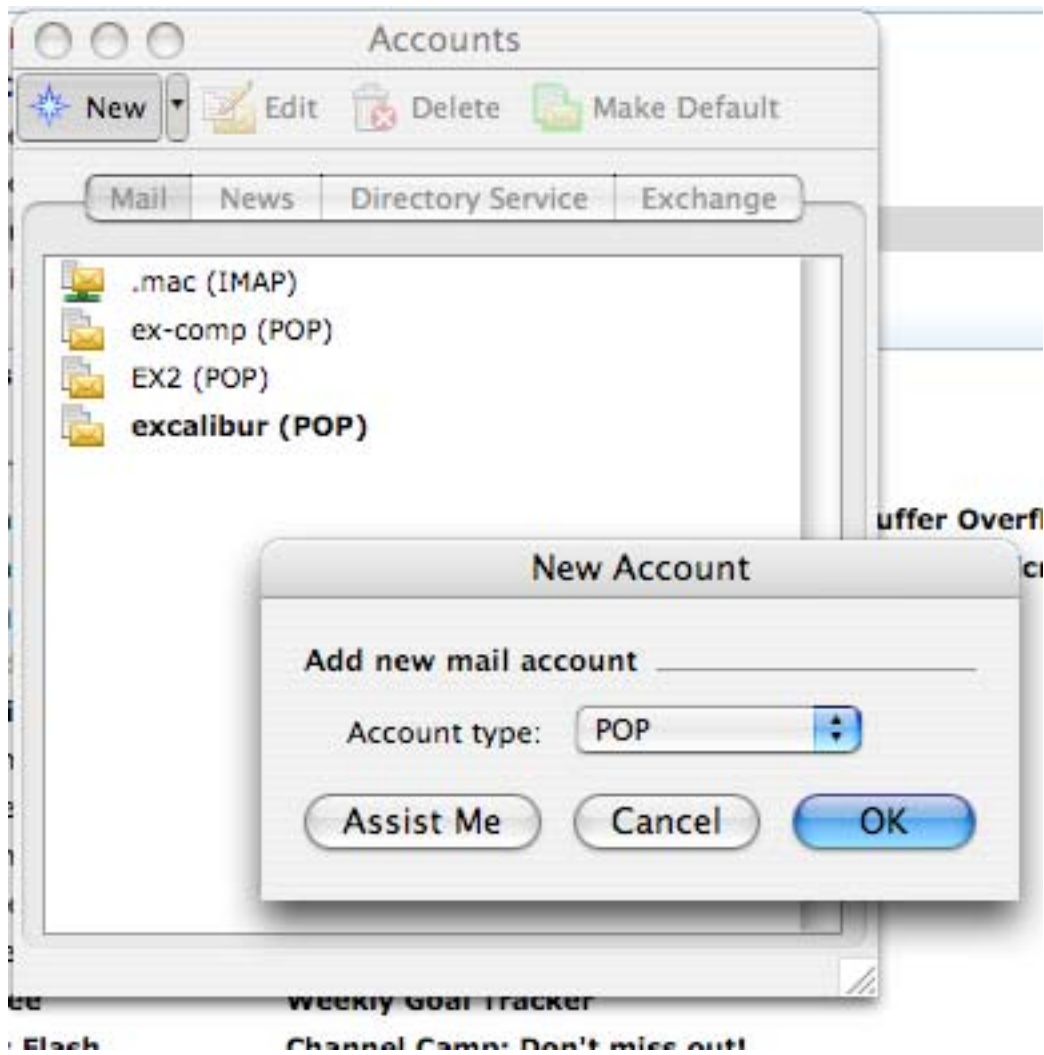


## How to Setup Entourage Email

1. Open Entourage
2. Under the Entourage Menu Choose Account Settings

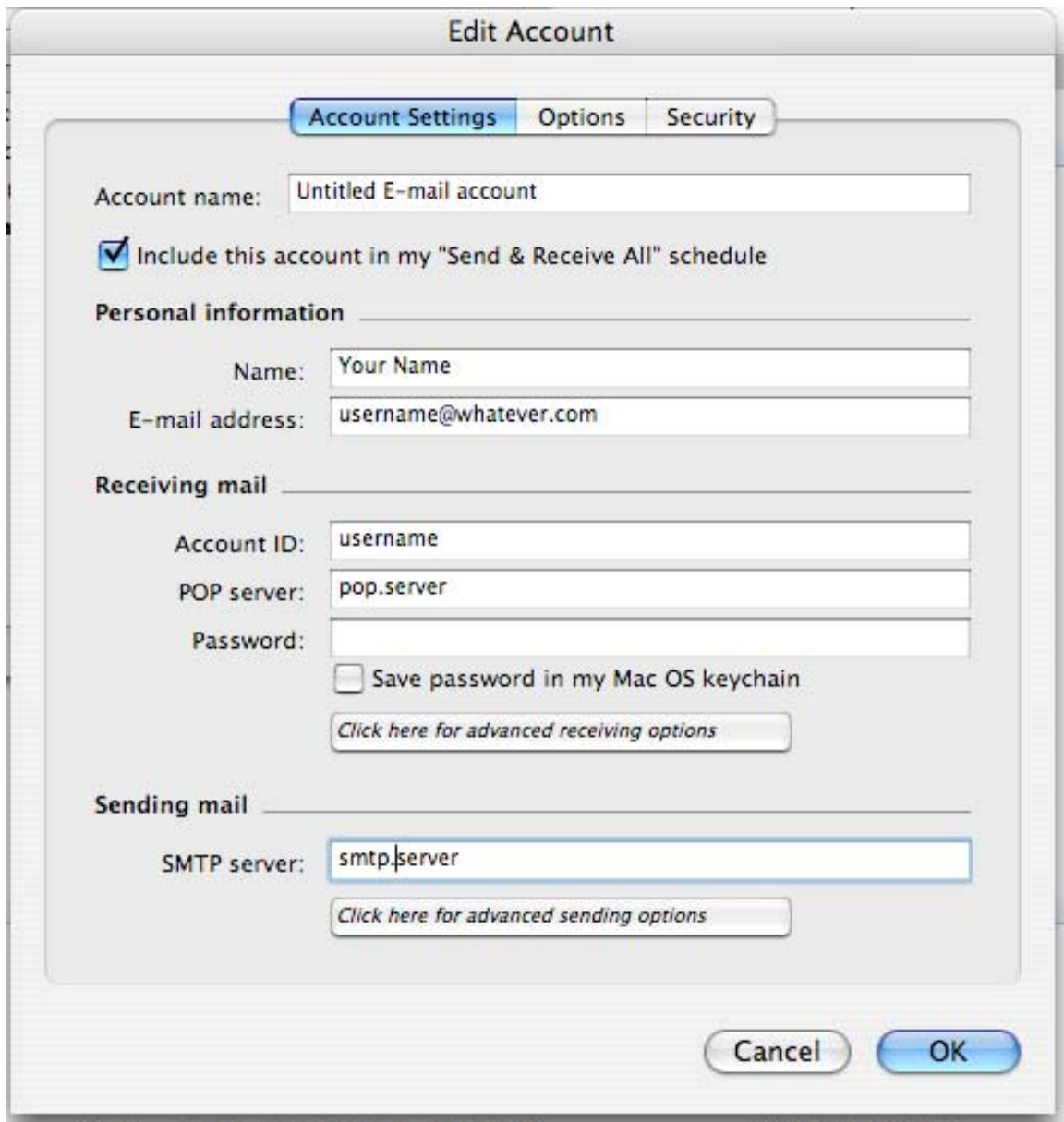


3. In account settings choose New if it is a POP account

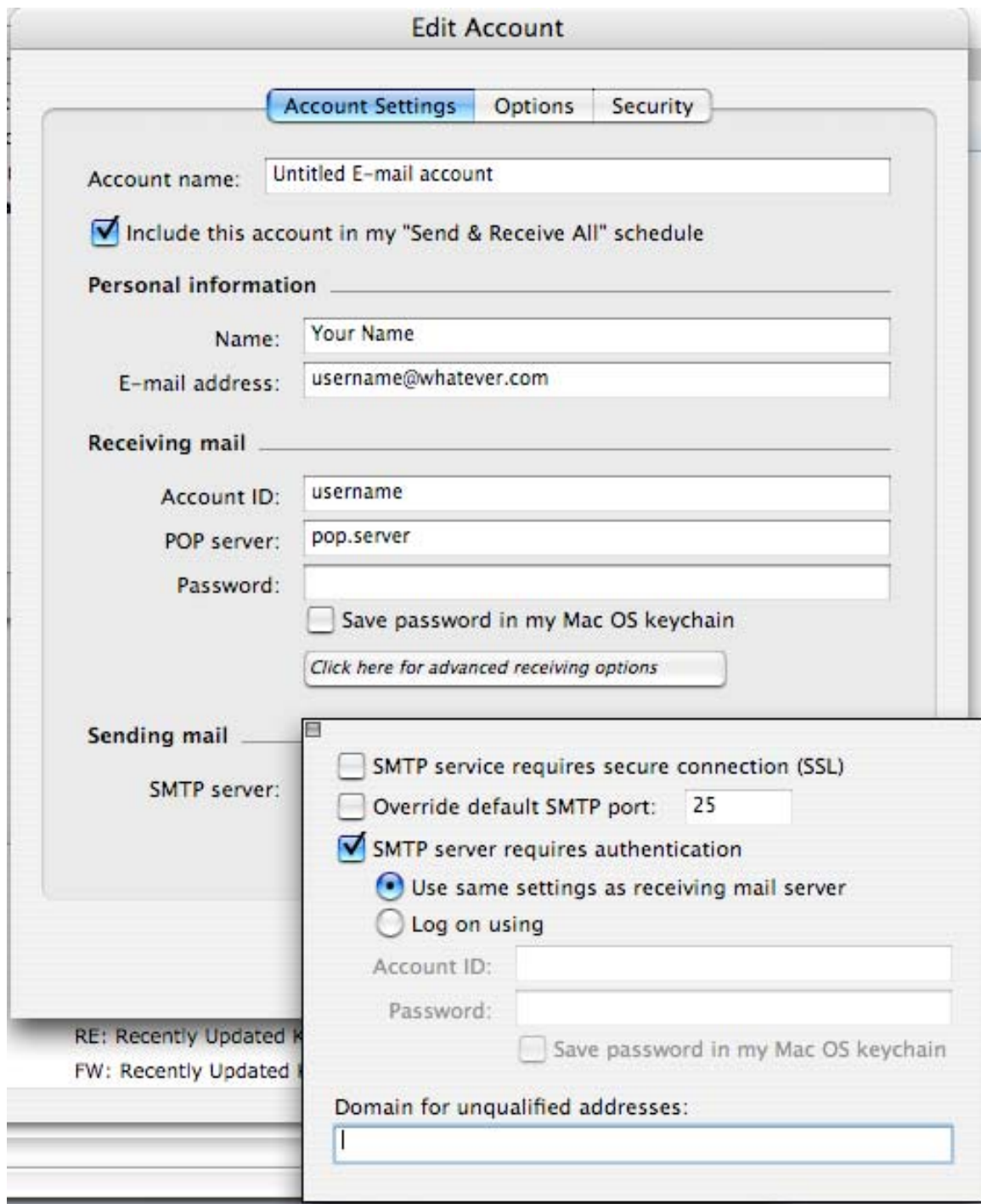


**4. Choose pop and hit OK**

**5. Enter the specific info for you email account**



6. Click Advanced Sending Options and Choose your Correct SMTP options



7. When Finished click ok